

GENERAL PRACTICE

PRODUCT OFFERS 2024



CONTENTS

Training & education with USL..... 2

About USL 3

Setting up a Practice 4

USL Product Managers & Sales Team 5

NEW to USL BOVIE range..... 6

Illuco Dermatoscope..... 8

NEW Reynard Medicurains..... 8

ILLUCO

 Headlight..... 9

 Loupes 10

WELCHALLYN

 Otosopes 11

 Ophthalmoscopes 12

 Diagnostic sets 13

 Wall systems 14

 Lumiview & iExaminer,

 ProBP & Spot Vital signs..... 14

 PROBP 3400 & 2000..... 15

 Spot Vital signs..... 16

Look After Your Ears 17

 Tympanometer 18

HUNTLEIGH

 Smartsigns..... 19

 Dopplers..... 21

 Ankle Brachial 21

Philips HeartStart HS1 AED 22

Surgical & Medical Instruments 23

MELAG Vacuclave..... 24

Oximeters..... 25

WOUNDCARE

 Atrauman Ag, PolyMem, Atrauman Silicone

 Octenilin, Alprep Pad & Biatain 26

SIDHIL

 Plinths & stool 27

USL Treatment Couches..... 28

USL Brace & Support Range..... 29

Biomedical Service.....back page



TRAINING & EDUCATION WITH USL

Standard product in-services and on-site product training can be carried out by either your Account Manager or Product Manager. Larger educational sessions and workshops can be co-ordinated by the relevant Product Manager and may include independent clinical support where required. We can utilise our local supplier expertise in the delivery of education and workshops, and there may be instances in which education is delivered by both USL and local supplier personnel.

Please contact your Account Manager for more information.



ABOUT USL

USL Medical is committed to becoming a world class supplier of healthcare products to 9,000 customers in New Zealand. Our core belief is that we will achieve success through service to, and partnerships with our clients



BECAUSE WE CARE

USL Medical has spent over 40 years developing a product range and systems which allow our customers to focus on their patients – leaving USL to get on with the business of supplying their product in full, on time and in specification.

We recognise that there are only a few ways left to create a defining point of difference, making USL the supplier of choice in the New Zealand healthcare market – our difference is found in the commitment we demonstrate to service and the value we add to our clients' business through our innovative products and systems.

Our stakeholders include the care providers and patients who rely on our ability to supply the right product at the right time, and our employees, to whom we are committed to providing an entrepreneurial environment that stimulates and rewards their creativity and innovation.

Equally, we know that our relationships over time will only be maintained if the partnerships we build are based on integrity, honesty and transparency.

Our values are based on the following: Customer intimacy / Performance / Continuous improvement / Partnership / Integrity and respect / Creativity / Growth People / Innovation / Operational Excellence

SETTING UP A NEW PRACTICE OR EXPANDING?

LET USL MEDICAL HELP YOU.

We have over 40 years experience working with our customers and understand your needs when it comes to setting up a new practice. We have developed three documents designed to help simplify the process, ensuring compliance standards are met and to keep you on track with your budget.

3 SIMPLE STEPS

CHECKLIST

A starting point to identify your needs.

1

PRODUCT WORKSHEET

Keep track of your essential items based on your clinical requirements and working with your budget.

2

3

COMPREHENSIVE PROPOSAL

Includes a quote, imagery, product specifications and warranty information.



USL PRODUCT MANAGERS



PETER GARDNER
Business Manager –
Medical Markets



EMMA HAIGH
Assistant Manager –
Medical Markets



Debbie Hollis
Product Manager –
Debbie has been with
USL for 24 years. Debbie
is a registered nurse,
specialising in Adult
and Pediatric Intensive
care nursing and has a
wealth of experience with
providing education and
support to the Diagnostic
Products in the Welch
Allyn/HillRom portfolio.

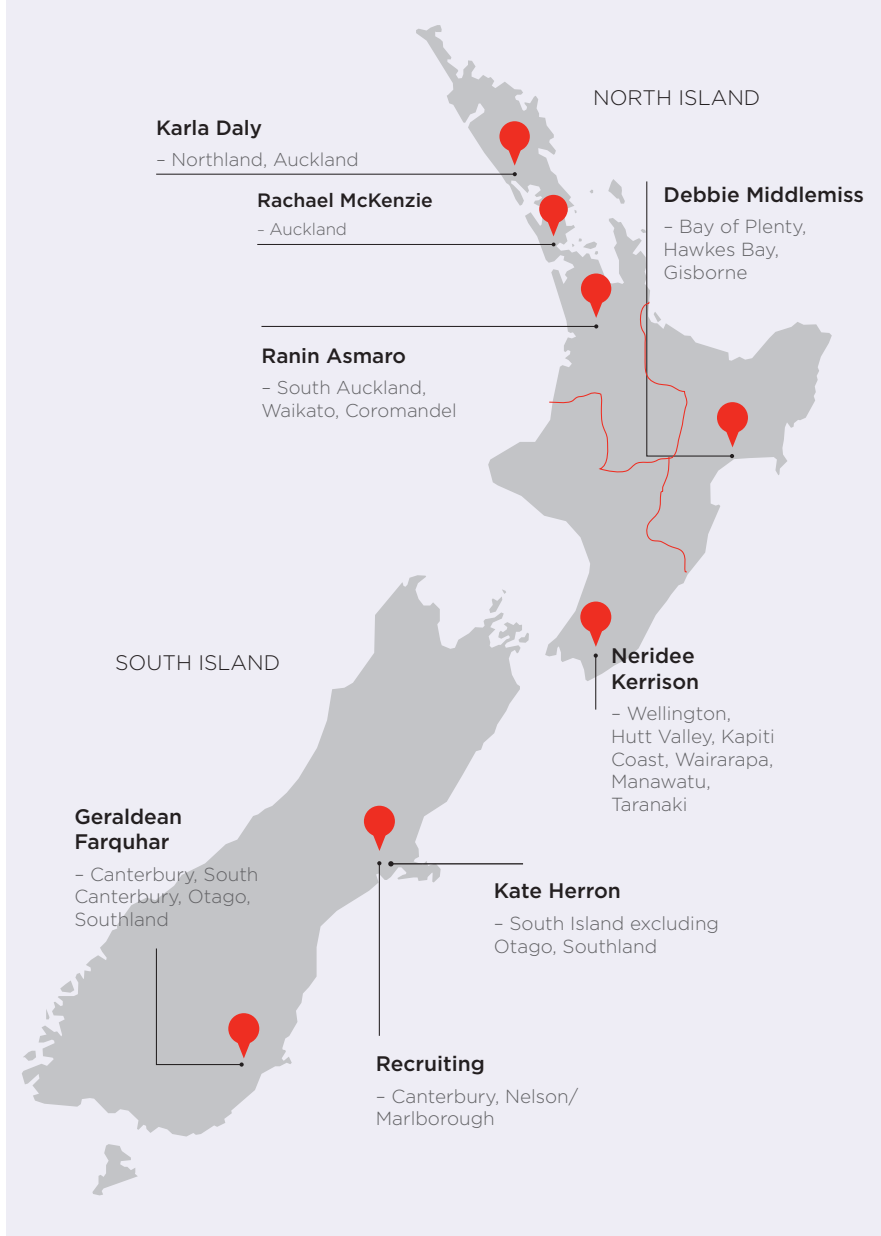


Claire Greenwood
Product Manager –
Claire loves to teach
and has studied Clinical
Education at Masters
level. Claire is a Paediatric
Cardiac intensive care
nurse- who now looks
after the critical care
equipment portfolio
for USL.



Ian Durham
Product Manager –
Ian has 14 years'
experience of medical
sales at USL Medical.
Ian's diverse portfolio
of products focuses on
patient centric solutions
for moving and handling
and patient rehabilitation.

PRIMARY CARE SALES TEAM



Sinead Blee
Product Manager –
Now the wound care
product manager for USL,
Sinead has spent the last
12 years as a community
district nurse and a
clinical nurse specialist,
completing a Masters
specialising in wounds
and cardiothoracics.



Sabrina Tan
Product Manager –
Sabrina joined USL
initially in 2009 for a
year before returning to
China to get married and
work within her parents
business. Returning in
2016 to the Purchasing
team, Sabrina used her
incredible data skills to
keep the stock from our
local suppliers coming
in and going out with
ease and accuracy. Her
strengths were rewarded
with a promotion to
Business Analyst for the
Supply Chain team for
a short period before
being promoted again
to Associate Product
Manager for Local and
Direct Supply. It is here
that she is currently
managing the biggest
range of USL products
and enabling seamless
transactions with our
Chinese manufacturers.



Jo Rice
Product Manager –
Jo has been with USL for
12 years and looks after
our large range of braces
and supports. With a
background in personal
training, Jo enjoys
educating and guiding
clinicians on choosing
and fitting the correct
brace or support.

NEW range

USL Medical are happy to add the **Bovie®** Electrosurgical Products to our portfolio.

Bovie® is the MOST TRUSTED and RECOGNISED Brand in Electrosurgery

BOVIE® DERM 942



The Bovie DERM 942 comes with 40 watts of coagulation capabilities and is adjustable in 1/10th watt increments in the first 10 watts (in monopolar and bipolar). It is a ground reference unit which means no grounding pad is required.

CODE BA942

BOVIE® A952



The Bovie® A952 (Bantam PRO) is a high frequency desiccator that also has cutting ability. The unit provides 50 watts of cutting power and coagulation modes – plenty of power for most procedures performed in the doctor's office. Power is adjustable in 1/10th watt increments from 0 to 10 watts, for the most accurate output available

CODE BA952

BOVIE® SPECIALIST | PRO



The Bovie Specialist | PRO (A1250S) is the affordable solution for the busy physician office or specialty facility.

The multi-purpose unit features a modern push button design and is capable of most monopolar and bipolar surgical procedures.

The Specialist | PRO offers 5 energy outputs with up to 120 watts of power; modalities include Cut, Blend, Coagulation, Fulguration and Standard Bipolar.

The unit is designed with dependable safety features like BovieNEM™ (Neutral Electrode Monitoring) pad sensing technology, BovieDED™ (Digital Error Detection), audible alert tones and self-test circuits.

CODE BA1250S

BOVIE® SMOKE SHARK 2 SMOKE EVACUATOR



Effective smoke and particulate removal. A modern, light-weight, compact design allowing for simplified use, storage and stack-ability The SF35 Extended-Life Filter offers up to 35 hours of performance reducing procedure cost by ~38% from the previous model, when used at the lowest setting.

CODE BSE02220

Bovie Cauteries - Low and High temp available - Disposable or reusable

Common Cauteries and Tips

HIGH-TEMPERATURE CAUTERIES – Single use & reusable

Bovie® has been the number one manufacturer of battery operated cauteries for decades.

The safety-enhanced, snap-design cautery is the only battery-operated cautery in the world to address known safety hazards of improper disposal.

The improved patent-pending cautery offers a safety-enhanced design, with a recessed button to reduce the potential for inadvertent activation.

The cautery units are also modified to enable practitioners to “snap off” the end of the cautery for safe and effective removal of the battery power source.



Disposable 10/box

	BAA05	Bovie Cautery High-Temp Loop Tip Extended Shaft
	BAA01	Bovie Disposable High Temperature Fine Tip Cautery
	BAA00	Bovie Cautery Low-Temp Fine Tip
	BAA90	Bovie Cautery Low Temp Micro Fine Tip

Reusable - replace the tips

	BHIT0	Bovie Power Handle Low-Temp- Resuable
	BHIT1	Bovie Power Handle High Temp

LOW-TEMPERATURE CAUTERIES – Single use & reusable

Bovie® has been the number one manufacturing the battery operated cauteries for decades. The safety-enhanced, snap-design cautery has been enhanced based on valuable customer feedback.

The improved cautery offers a new safety-enhanced design with a recessed button to reduce the potential for inadvertent activation.

Bovie® also modified the cautery units to allow the practitioner to “snap off” the end of the cautery for safe and effective removal of the battery power source. 10 per box





ILLUCO IDS 1100 DERMATOSCOPE

A hand-held hybrid Dermatoscope with polarized light illumination with smartphone compatibility, for use in the examination of various skin lesions.

- 10 x magnification
- 25mm large field of view
- 10mm scale for measurement
- 3 Levels of brightness control
- Polarized and non-polarized illumination
- Non-contact examination (detachable protect glass)
- 7 year manufacturer's warranty

**SPECIAL
OFFER**
\$1,195.00

INCLUDES
– universal phone
adapter and silicone
sleeve lanyard

**Normally
\$1500.00**
while stocks last
CODE: ILL-IDS-1100

NEW to USL Reynard Medicurtains



Recyclable
(refer to our
recycling
guidelines for
more information)



Fire retardant
– failing to burn
when tested
to Australian
standards



Lightweight
and easy to
manoeuvre –
reducing the
OH&S risks
of curtain
maintenance



Standard



With mesh

Haines® MediCurtains are designed to replace reusable curtains in hospitals or healthcare facilities requiring patient privacy and screening. Instead of the cumbersome and costly process of washing untreated reusable curtains, Haines® MediCurtains can remain hung for set intervals of up to two years (depending on the infection risk of the area they are hung). This is possible due to antimicrobial chemical-infused fabric, which actively inhibits bacterial growth.

Product Code	Description	Size	Colour	UOM
HN-DC25B	Standard	Width 2.5m Drop 2m	Summer Blue	CTN15
HN-DC45B	Standard	Width 4.5m Drop 2m	Summer Blue	CTN8
HN-DC75B	Standard	Width 7.5m Drop 2m	Summer Blue	CTN5
HN-DC45BM	With Mesh	Width 4.5m Drop 2.3m	Summer Blue	CTN8
HN-DC75BM	With Mesh	Width 7.5m Drop 2.3m	Summer Blue	CTN5

7 standard colours



3 prints

Choose from:

- **3 widths** – 2.5m, 4.5m or 7.5m (to span maximum areas of 1.8m, 3.6m and 6.8m)
- **Various drop lengths** – Standard drops of 2m or 2.3m (the latter have 50cm mesh at the top, for fire regulation compliance when ceiling mounted) and custom-cut drops are available upon request
- **Many colours & designs** – 7 single-colour, 3 multi-colour prints (including 2 popular paediatric designs) and 9 special order colours as well.
- **2 hook types** – Roller hooks or 'S' style hooks to adapt existing hooks (if required)

Illuco Headlights

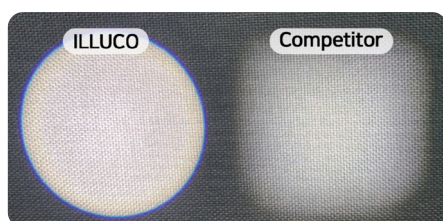
Illuco Headlights have a Uniform and Vivid Round Spot and Illumination over run time

Illuco-2000 cordless Headlight

Comes with two small rechargeable batteries that attach to the headlight magnetically



CODE ILL-HEADBAND-2000



Weight	37g
Light intensity	35,000 LUX
Color temperature	6000K
Focus beam size (@ 305mm)	105mm
Led life	50,000 Hr
Battery Life	160 min
Charging time	120 min
Battery life time	500 Recharge cycles
Curing filter	Included
LOW BATT (led indicator)	LED/beep sound
How to attach to battery	Magnet
Touch sensor	o
Indication of the battery recharge condition	o
Charging cradle	o
Maximum heat-generating temperature	35 degree

Illuco -1000 wired Headlight

Comes with a portable battery pack



CODE ILL-HEADBAND-1000

Weight	214g
Light intensity	45000 lux
Color temperature	6000K
Focus beam size (@ 305mm)	105mm
Led life	50,000 Hr
Battery Type	3.7V, 4800mAh
Battery Life	6-8 hr
Charging time	3.5 hr
Battery life time	500 Recharge cycles
Curing filter	Included
LOW BATT (led indicator)	LED
Indication of the battery recharge condition	6 steps

ILLUCO LOUPES

TTL LOUPES



2.5 magnification

CODE ILL-ITL-1000-2.5



3.0 magnification

CODE ILL-ITL-1000-3

- Ergonomic design for reduced fatigue
- Custom-made for individual needs
- Various magnification settings
- Remarkably lightweight and high-resolution
- Laser aligned optics for precise convergence angle

NEW FLIP-UP LOUPES - IFL SERIES



3.5x magnification, pink frames/white loupes



3.5x magnification, black frames/black loupes

3.5x magnification, silver frames/black loupes

- Available for different working distances
- Easily adjustable pupil distance to your preference
- Individual adjustment the left and right pupil distance

- Removable prescription lens
- Option to mount directly on your own frame
- Lighting can be added, see reverse

CODE ILL-HEADBAND-2000

**WORKING DISTANCE FOR
FLIP-UP LOUPES**
Your ideal working distance will be
determined by your height and
your operational position

Your Height	Seated position	Standing position
150 - 170cm	30cm	35cm
171 - 178cm	35cm	45cm
179 - 183cm	40cm	50cm
184cm +	45cm	55cm

INTRODUCING THE NEXT GENERATION OF PHYSICAL ASSESSMENT TOOLS

OTOSCOPES

All Otoscope heads have undergone a transformation. They are all now LED and are extra robust.

Welch Allyn MacroView and MacroView Plus Otoscopes.

Enhance exams with the MacroView Plus Otoscope, and the option to capture and share ear images for consultation. Both devices work on existing Welch Allyn 3.5 V power sources.

LED Otoscope

- LED lighting - 7 year Warranty
- NO BULBS
- Wide-angle viewing lens allows for instrumentation under magnification
- 1 year Warranty on Head

CODE: 40250-2



MacroView® Basic

- Text BoxText BoxFocus-free design
- DURASHOCK™ extra tough design
- Long-lasting LED illumination - No Bulb
- Integrated locking collar
- 3 Year Warranty

CODE: 40238-2



Can't be used for taking pictures

MacroView® Plus

- Focus-free design
- DURASHOCK™ extra tough design
- Long-lasting LED illumination - No Bulb
- Integrated locking collar
- Digital capability (attach iExaminer Bracket and capture images through iExaminer App)
- 5 year Warranty

CODE: 40238-3



Standard Otoscope

3X
LARGER VIEWING AREA



MacroView Otoscope

OPHTHALMOSCOPES

Although the Coaxial Ophthalmoscope remains the same the Panoptic has undergone a dramatic change.

Welch Allyn PanOptic and PanOptic Plus Ophthalmoscopes offer a brighter, wider view.

Enhance eye exams with the PanOptic Plus, featuring QuickEye™ alignment technology and the option to save and share eye images. Both devices work on existing Welch Allyn 3.5 V power sources

PanOptic™ Basic

- DURASHOCK™ extra tough design
- Long-lasting LED illumination – No Bulb-7yr warranty
- Traditional Ophthalmoscope Controls (-20 to + 25 diopters)
- Integrated locking collar
- 3 Year Warranty



Can't be used for taking pictures

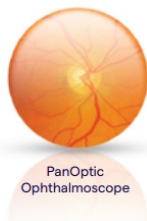
CODE: 40118-2

PanOptic™ Plus

- DURASHOCK™ extra tough design
- Quick Eye Alignment
- Long-lasting LED illumination – No Bulb-7yr warranty
- Traditional Ophthalmoscope Controls (-20 to + 25 diopters)
- Integrated locking collar
- Digital capability (attach iExaminer Bracket and capture images through iExaminer App)
- 5 Year Warranty



CODE: 40118-3



3.5V Coaxial Ophthalmoscope

- LED head

CODE: 4011720L



DIAGNOSTIC SETS



CODE 4071PM3LXE

- PanOptic PLUS
- MacroView Plus
- Li-Ion Plus USB-C
- iExaminer - Hard Case (Allows you to take images)



CODE 4071SM2LXU

- LED Coaxial
- MacroView Basic
- Li-Ion Basic USB
- Hard Case



CODE 4071PM2LXU

- PanOptic Basic
- MacroView Basic
- Li-Ion Basic USB
- Hard Case

Can't be used for taking pictures



UNIVERSAL DESK CHARGER

- Integrated light indicators highlight that power is flowing to the unit and that handles are charging
- Designed for Welch Allyn Lithium Ion, Lithium Ion Plus battery handles as well as 3.5 V or 2.5 V NiCad, Lithium Ion and PocketScope™ handles
- Optional wall mount kit to affix on wall or cabinet



Welch Allyn Universal Desk Charger only

CODE 40719DSK-6



Welch Allyn Universal Desk Charger, Li-Ion Plus USB-C X 2 Handles

CODE 4071XXXLDE-6

Integrated wall system with Diagnostic set



Wall Mounted 767 Sphygmomanometer and Speculum Dispenser
Code 777-SM2WAX-6



Wall Mounted Diagnostic set on its own.
Code 40777SM2XXX-6

LUMIVIEW™ CLEAR EAR SPECS

Features

- Disposable
- 4x brightness when compared to standard black specs
- Available in two sizes: Pediatric and Adult
- Compatible with most popular Welch Allyn® otoscopes

Benefits

- Disposable ear specs offer reduced risk of cross contamination
- Enhanced illumination and view of the ear canal and tympanic membrane (ear drum)



CODE	Description
4052432CLR	W/A Disp Clear Ear Spec 2.75mm (tube 34)
4052434CLR	W/A Disp Clear Ear Spec 4.25mm (tube 34)

IEXAMINER SMARTBRACKET ACCESSORY including three SmartClips-lets you capture and send images



- Universal bracket can be used on most smart phones.
- IEXAMINER SmartBracket slides onto the smartclip that is attached to your phone case and aligns with the camera lens
- Pro 3.0 App is used to capture eye and ear examinations- Available in Apple Store and Android Play Store

DETECT, DIAGNOSE AND MANAGE HYPERTENSION

WELCH ALLYN® PROBP 3400 with SureBP

Automatic BP unit with fast BP technology. Does not get tight on the arm

- SureBP™ NIBP technology enables fast, accurate 15-second readings
- Compatible with Welch Allyn cuff sizes from small child to thigh
- Lithium ion battery technology delivers up to 100 readings on a single charge
- Configurable to match your workflow and specific patient needs
- Meets AAMI Standards, awarded BHS A/A rating.
- Obtains accurate readings, even in the presence of some motion or weak pulse



SPECIAL
\$1,451.00

NORMALLY
\$1,587.00
CODE
4034XFHT-6



SPECIAL
\$330.40

CODE
40PRO2000



WELCH ALLYN® PROBP 2000 with SureBP (AA BATTERIES)

The Welch Allyn ProBP 2000 is fast, professionally validated BP measurement in ~20 seconds at your fingertips

- Blood pressure readings are captured on inflation in about 20 seconds
- Meets AAMI standards for blood pressure accuracy
- Compatible with Welch Allyn FlexiPort Reusable Blood Pressure Cuffs, from child size 9 up to thigh size 13 (15 - 55 cm range) (Validated for 3 years old and above)
- Device ships with one adult size 11 FlexiPort Reusable Blood Pressure cuff

NB- Power Cable available- 40107041- \$56.20

WELCH ALLYN® SPOT VITAL SIGNS® 4400 device



ACCURATE READINGS ARE VITAL Vital signs matter. The first set of patient vital signs can provide a baseline reference for the entire chain of healthcare.

The Spot 4400 is **Simple** - An intuitive, all-in-one design makes the Spot Vital Signs device easy to use—for caregivers at any level.

Accurate - Trusted for clinical accuracy and consistent measurements



Mounting options

Mobile Stand

CODE 404400-MBS



Desk Stand

CODE 404400DST





LOOK AFTER
YOUR EARS

SPECIAL
\$2,860.00

CODE: 8507802

INCLUDES
**A PAIR OF
NOISE
REDUCING
HEADPHONES**

Screening Audiometer

An innovative manual screening audiometer.

The Amplivox 116 combines style with functionality and is the ideal manual screening audiometer, being totally portable

- Pure tone, continuous, pulsed and warble tones
- Threshold retention function
- Talk forward function
- 125 to 8000 Hz test frequency range
- -10 to 100 dBHL range
- Supplied with carry case, patient response switch and mains PSU
- Tests can be saved to patient notes



ECS Otosure-Audiometer+ Audiocups

For fast, accurate hearing tests, the Otosure is a PC-based automatic screening audiometer designed to provide health professionals with significant workflow improvements through time and cost savings. Customised test options Automatic and manual test modes enable all subject hearing thresholds to be established and categorised. The Otosure also has configurable options so the test can be customised to the users' specific requirements, ensuring accurate and efficient testing.

CODE: 8508177



SPECIAL
\$4,185.00

CODE: 8508177



OTOWAVE 102

The Otowave 102 is a very intuitive Tympanometer to use with on-screen information displayed before, during and after the test

COMES WITH

- Eartip selection box
- 4x test cavities
- Spare probe tips and gaskets
- 4 x AA batteries
- Carrying case
- AmpliSuite PC software (stand-alone)

OTOWAVE 102-C

Lightweight and portable, the Otowave 102-C has the battery life to keep up with your whole working day.

With a charging and data transfer cradle, plus a user intuitive menu setup, the Otowave 102-C is perfect for any testing environment. Start the device, insert the probe and perform a tympanogram in only 3 seconds.

The Otowave 102-C is supplied with its own Data Management Software (ampliSuite).

COMES WITH

- Otowave 102-C
- Charging and Data Cradle
- Eartip selection box
- 4x test cavities
- Spare probe tips and gaskets
- Carry case
- AmpliSuite PC software (stand-alone)
- The USB cable is included to transfer tests to your computer



COMPARE USER FEATURES

	Otowave 102	Otowave 102-C
Totally portable	✓	✓
Cradle option Nil	Nil	✓
PC connectivity (USB)	Nil	✓
Thermal printer output	✓	✓
Internal memory	✓	✓
Battery power function	AA Batteries	Built-in rechargeable battery
Mains power function (adaptor supplied)	Nil	via cradle
Carry case supplied	✓	✓

HUNTLEIGH®

smartsigns®

COMPACT 300

“THE SC300 SITS COMFORTABLY IN ANY HOSPITAL WARD, CONSULTING ROOM OR CLINIC”



PRICING FROM
\$2150.00

FOUR AVAILABLE OPTIONS

- NiBP, Pulse and SpO₂
- NiBP, Pulse, SpO₂ and temperature
- NiBP, Pulse and SpO₂ (Nellcor)
- NiBP, Pulse, SpO₂ (Nellcor) and temperature

Each Smartsigns Compact 300 monitor delivers three types of BP measurement:

- Infant, Paediatric and Adult





HUNTLEIGH®

FETAL DOPPLERS

THE FDI MKIII DIGITAL DOPPLER



**SPECIAL
\$1,400.00**

INCLUDING PROBE

NORMALLY
\$1900.00
CODE 14646

SONICAID FD1 & FD3 MKIII

Fetal Heart Rate Display Dopplers with fixed waterproof 2MHz or 3MHz probe features:

- Compact and light-weight design for ease of portability
- Large high contrast LCD display of FHR in BIG numbers
- Combined Power ON/OFF/Volume control for ease of use
- High sensitivity probes to maximize performance in a wide variety of clinical applications and procedures
- Supports 2MHz and 3MHz waterproof probes suitable for use in water birth
- Easy clean probes for improved infection control
- AA batteries for convenience and long term cost effectiveness

D920 FETAL DOPPLER



**SPECIAL
\$1150.00**

NORMALLY
\$1,400.00
CODE 10046

SONICAID D920/D930- AUDIO DOPPLERS WITH 2MHZ OR 3MHZ WATERPROOF PROBE

Our audio only modules are available with fixed 2 or 3MHz waterproof probes. Our High Sensitivity Probes provide excellent audio quality and ensure easy and reliable detection throughout pregnancy.

- Battery Low Indicator.
- Easy Clean Transducer for Improved Infection Control.
- Waterproof Probe Suitable for use in Water Birthing Environment.
- Belt Clip to Aid Handling



THE DOPPLEX® BI-DIRECTIONAL DIGITAL DOPPLER

Our bi-directional waveform is uniquely generated from the digital doppler spectrum. This gives the clinician objective evidence to assist in the diagnosis of vascular disease that other dopplers may find difficult or impossible to achieve.

- High resolution colour display
- Bi-directional waveform
- Data storage on micro SD card
- Integrated charging & connectivity
- High sensitivity interchangeable probes
- Hear the difference



DOPPLEX® D900

The Dopplex® D900 is an entry level, audio only, non-directional Doppler, principally used for ABI measurements by community nurses and doctors in their role of leg ulcer management.

- Clear audio sounds of blood flow
- Compatible with all XS high sensitivity vascular probes
- Audio output socket
- Large carry bag

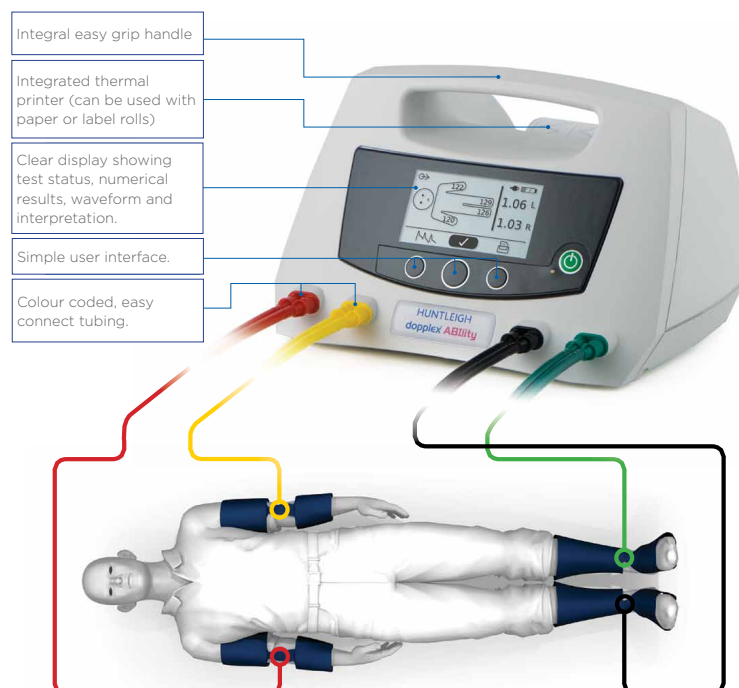


AUTOMATIC ANKLE BRACHIAL INDEX SYSTEM

REVOLUTIONISING ANKLE BRACHIAL PRESSURE INDEX MEASUREMENTS

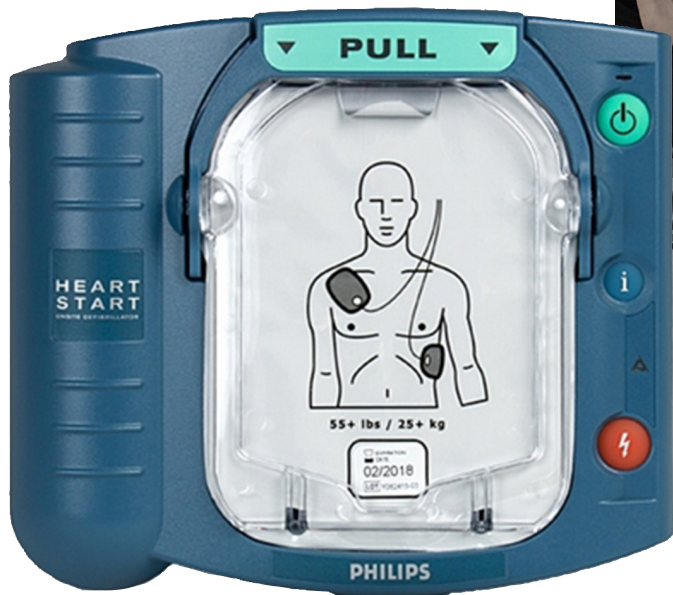
Ankle Brachial Index System has never been simpler or quicker. It's portability enables measurements to be made more efficiently in the primary care clinic, hospital or patient's home. This can lead to the prioritisation of clinical services by improving clinical pathways.

ABIs are calculated easily and accurately in three minutes without the need to rest the patient. Results are automatically calculated, interpreted and displayed with Pulse Volume waveforms on the LCD panel. The test results can be printed on either thermal paper or adhesive backed label paper via the integral printer.



USL is now New Zealand's
official Philips AED supplier

Advanced technology.
Proven therapy.



Side by side. Step by step.

Philips HeartStart HS1 AED

Over 2000 New Zealanders suffer an out of hospital cardiac arrest every year. Every minute CPR and defibrillation is delayed, survival decreases 10-15%. Do your bit to save a life. Have an AED on hand.



HOME



WORKPLACES



SPORT CENTRES



PUBLIC PLACES

The **Philips HeartStart HS1 AED** assists you through the process of treating a victim of suspected sudden cardiac arrest (SCA). HS1 provides practical, real-time guidance through step-by-step voice commands and CPR guidance.

- Includes features to help guide the treatment of SCA with easy setup, clear voice commands and real-time metronome
- Arrives virtually ready to use — with the Ready-Pack configuration, HS1 is positioned inside the carry case with Adult SMART Pads Cartridge and battery already installed
- Guides you through a cardiac emergency with a simple, step-by-step process, adaptive instructions and intelligent sensors to help deliver therapy
- Use on infants and children under 25 kg (55 lb) or 0-8 years old. Infant/Child Smart Pads, code 861292
- No annual servicing required.

CODE	DESCRIPTION	PRICE
861282	Philips Heartstart Defibrillator HS1 Device with Adult Pads, Carry Case and Battery	\$2,293.00
861291	Philips Heartstart HS1 Adult Smart Pads- 30mth exp	\$140.00
861292	Philips HS1 Infant/Child Smart Pads <25kg or 8 Yrs Old -30mths exp	\$246.00
989803101861	Philips AED Fast Response Kit	\$119.00
989803170891	Philips AED Perspex Wall Mount	\$217.00
989803170931	Philips AED Wall Sign Green	\$82.00



CODE: 861282

INSTRUMENTS

SURGICAL/MEDICAL

HIGH QUALITY, HUGE VARIETY & GREAT PRICING

Professional quality surgical/medical Instruments of all sorts, which have being manufactured from our supplier for over 20 years!

Our products are CE and ISO 9001:2008, ISO 13485 certified, fully autoclave-able and made to outperform all others. They are filed, assembled, aligned, polished and honed by the hands of specialist craftsmen in a privately owned manufacturing facility. Our products are crafted from vacuum tempered, hot-forged, hypoallergenic, surgical grade stainless steel and recommended by the FDA America.



2013825FR



5305115R



JB5602155



JBP78603R



610614PNK

**CONTACT US
NOW** FOR SPECIAL
PRICING ON ALL
YOUR INSTRUMENT
NEEDS



11S032



544515R



P78610R



6011513TC



P78653

Guarantee Because you want to be **TOTALLY CONFIDENT** of your purchase decision, we offer you our "steel-clad" money back guarantee. All our products go through two quality control checks to assure all products reach you in perfect condition. However, in the unlikely event that you are not satisfied with the quality of our goods because they have a fault in appearance or functionality, send your faulty goods back and we will refund your purchase price, or can provide you a new item in exchange for the faulty one.

A LEGEND. REBORN.

The new Pro Line

Vacuclave 118 / 118 S
& Vacuclave 123 / 123 S

Our entry-level models:

The **Pro Line class B** or **S** autoclaves offers everything you need for a safe, convenient and resource-saving sterilisation.

Powerful class B or S vacuum procedure

Reliable sterilisation of up to 6 kg on 5 trays in only 15 to 28 minutes (plus drying) - made in Germany.

Stand-alone device concept

Integrated water tanks and highly effective air cooling for site-independent operation without cooling water.

Smart-Touch Display with LED status

Touchscreen with intuitive user interface for simple operation like your smartphone - even with medical gloves.

Power Save energy saving mode

Heater and display go into standby mode between sterilisations for top energy efficiency.

Connectivity and data logging

Compliance with legal requirements by saving the sterilisation parameters via USB or network or log printout via MELAprint 80.

EasyCare routine concept

User-friendly optimisations for efficient filter replacement, tank cleaning and water supply.

SAVE EVEN MORE:

The Pro Line class S autoclaves offer an even more affordable alternative for practices and clinics that do not require a class B autoclave due to the instruments used. Vacuclave 118 S and Vacuclave 123 S even sterilise packaged instruments with simple hollow bodies (e.g. hinged instruments such as scissors and needle holders).

AVAILABLE SOON

Contact Ian Durham
on 021 410 894 for more
information.



PULSE OXIMETERS



HUNTLEIGH® SMARTSIGNS MINI PULSE

Designed and built in the UK, this ergonomically designed hand held device displays the patient's saturation level and pulse rate on large high visibility LED displays. Fast reliable measurements can be made on all patient groups – adult, paediatric and neonates.

Supplied with a comprehensive range of **STANDARD** accessories:

- Protective cover
- IV pole attachment
- Integral probe storage facility
- Desk stand
- Adult finger probe

The device has been designed for the widest possible user group and is ideal for either **SPOT** or **CONTINUOUS** measurements.

- Paediatric probes available

**STARTING AT
\$1125.00**

NORMALLY \$1,450.00

CODE 10366

*Including
Adult Probe

OXIMETER SPECIALS

BERRY®



**TWO FOR
\$60.00**

NORMALLY \$95.00 each
CODE 20341

**ADULT FINGER
PULSE OXIMETER**



**PAEDIATRIC
PULSE
OXIMETER**

\$70.00

NORMALLY \$95.00 | CODE 12229

Infected wounds?

Treat with **Atrauman® Ag**

Impregnated Silver Wound Contact Layer
from **HARTMANN**. Atrauman® Ag is a low adherent wound contact layer which contains silver. Designed specifically for contaminated, traumatic wounds helping reduce the risk of infection.



Atrauman Silicone

Silicone contact layer which can stay in place for up to 7 days allowing the wound bed to remain undisturbed. Ideal for skin tears and burns.



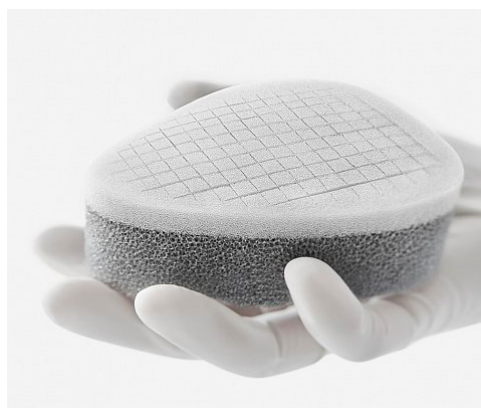
> octenilin®

Wound Irrigation 350ml. water-based, for cleaning and moisturising chronic wounds & burns.

Alcohol-free solution containing Octenidine

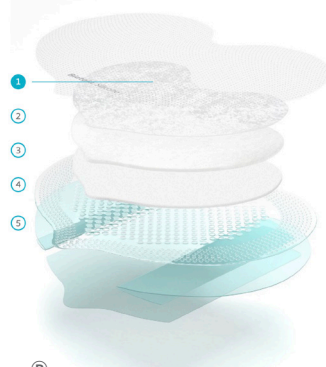


Alprep Pad



Alprep Pad is a two-in-one cleansing and debridement tool, rated by clinicians as effective and convenient to use. It is suitable for a wide variety of wounds including non-infected wounds, infected wounds or wounds with suspected biofilm. Use Alprep Pad to cleanse and debride the wound bed, the wound edge and periwound skin by gently wiping the surface of the wound.

Pressure injury prevention from **Coloplast** with their five layer foams



Biatain® Silicone Foam

- Soft, flexible foam dressing with a permeable silicone contact layer to aid dressing removal
- Protection and absorption
- Protects wounds whilst absorbing moderate to high levels of wound fluid



PolyMem



PolyMem®
for fast recovery

FEATURES AND BENEFITS

- Contains Glycerol identical to human body
- Contains sustained release surfactant to breakdown slough
- Super absorbent starch 6-Polymers
- Polymeric membrane causes capillary action
- Optimal MVTR, moisture vapour transmission rate



SIDHIL WINCHESTER FIXED PLINTH 2 SECTION

The Sidhil Fixed Plinth - please note that the plinth is supplied without drawers, drawers are sold separately.

- Extremely reliable self locking multi-position adjustable backrest
- Unstitched, rounded upholstery corners for hygiene and cleanliness
- Simple levelling for uneven floors
- Sculptured tube frame to ease backrest lifting
- Comes with one drawer free of charge, multiple drawers can be added
- Maximum user weight 160kg
- Back rest angle 70degrees
- Fixed height 80cm
- 2 section
- Overall height 80cm
- Product total weight 35kg
- Delivered flat packed and some product assembly is required

CODE COU90

SIDHIL FOOT STOOL ONE STEP

- Finished in a white epoxy coating
- Weight loading grooved anti-slip rubber treads
- Anti-slip rubber feet
- User weight 160kg (25st)
- Height of stool 14cm

CODE COU73



SIDHIL DRAWER FOR WINCHESTER COUCH

Key features of the Sidhil Standard size drawer

- Designed to complement the well established Winchester Couch
- The drawer system can be combined to suit individual requirements
- Available to purchase separately and easily fitted to the couch as required

CODE COU92

Overall Depth 68.7cm
Overall Height 56.7cm
Overall Width 56.7cm

ASPIRE DOUBLE STEP FOOT STOOL

Post operative double step foot stool for bed access.
Ideal for use in physio and general practice

- Black, non-slip ribbed rubber surface
- Rubber stoppers for stability
- 220mm height of first step
- 400mm height of second step
- Warranty 1 year

CODE BEA014800



TREATMENT COUCHES

USL 3 SECTION TREATMENT COUCH WITH OR WITHOUT FACE HOLES



The USL 3 Section Couch is an excellent, all-rounder treatment table. The couch has an adjustable head and back section, making it the perfect solution for treatments in sitting and lying position. The Medical 3 Section Treatment Couch has the added facility of a gas strut operated leg section control that allows for added versatility for the clinician.

- Equipped with one motorised actuator for high/low adjustment
- Classic dual lift construction through all ranges of height adjustment
- Individually levelling foot on all four corners
- Four retractable heavy-duty castors
- Twin gas struts for solid head and leg section support
- Available in two widths - 62cm or 70cm
- Available with or without face hole

CODE 16923 BLUE 3 SECTION FACE HOLE
CODE 12087 BLACK 3 SECTION FACE HOLE
CODE 16922 BLUE 3 SECTION WITHOUT FACE HOLE

USL ADJUSTABLE ROUND STOOL

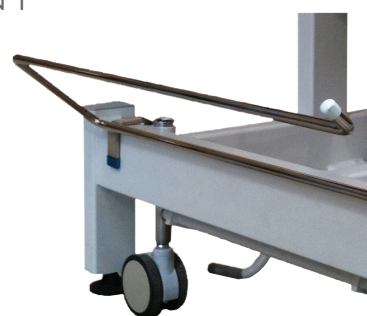
- Extra-large, 39cm fully rotational seat
- Adjustable pneumatic height range
- 5cm thick foam cushion
- Five-point, dual swivel castors
- Height adjustment 48cm - 61cm



CODE 14912

USL TREATMENT COUCH PAPER ROLL HOLDER

CODE 14760



USL BARIATRIC HIGH/LOW



FITTED STRETCHER SHEET



USL Treatment Table Covers, with and without face hole. Elasticated ends fit nicely and allow for bed adjustments. Suitable for the USL 3 section Treatment Tables.

- 100% polyester fabric

CODE 20014 3 SECTION HOLE NAVY 70CM
CODE 20016 3 SECTION NO FACE HOLE NAVY 70CM



USL BRACE & SUPPORT RANGE



Maximum stability and support following soft tissue injury or post-operative procedures

USL STABILISER MOON BOOT

- Acute ankle sprains
- Stress fractures of the lower leg
- Stable fractures of the foot and ankle
- Achilles tendon repairs

USL WRAPAROUND HINGED KNEE

The USL Wraparound Hinged Knee brace is designed to provide support, stabilisation and compression for most ACL, MCL, LCL strains, injuries and instabilities. Wraparound and hinged style accommodates all leg shape variations.



USL CODE	SIZE	KNEE CIRCUMFERENCE (15CM ABOVE KNEE CENTRE)
23033	X-Small	28 - 34cm
23034	Small	34 - 40cm
23035	Medium	40 - 48cm
23036	Large	48 - 54cm
23037	X-Large	54 - 61cm
23038	XX-Large	61 - 68cm
23039	XXX-Large	68 - 76cm

CODE SHORT	CODE TALL	BOOT SIZE	MENS SHOE SIZE	WOMENS SHOE SIZE	FOOT LENGTH
905078	22149	X-Small	Kid's 1½ - Men's 4	Kid's 1½ - Women's 5½	20 - 22cm
905079	22150	Small	4½ - 6½	6 - 8	22 - 24cm
905080	22151	Medium	7 - 9	8½ - 10½	24.5 - 26cm
905081	22152	Large	9½ - 12	11 - 12+	26.5 - 28.5cm
905082	22153	X-Large	12½ - 14		29 - 30cm

SHOULDER IMMOBILISER/SLING

USL UNIVERSAL SHOULDER IMMOBILISER

The USL Universal Shoulder Immobiliser is designed to support the arm and or immobilise the arm and shoulder.

- Universal size ensures a good fit for patients as velcro fasteners and forearm length can be adjusted for optimal effect



IMMOBILISER VIEW

SLINGVIEW

CODE	DESCRIPTION	SIZE
13912	USL Shoulder Immobiliser - Grey binding	Universal
13916	USL Paediatric Shoulder Immobiliser - Pink binding	Universal
13917	USL Paediatric Shoulder Immobiliser - Blue binding	Universal

WRIST & WRIST /THUMB

USL UNIVERSAL WRIST/PALM SUPPORT

The USL Universal Wrist/Palm Support is ideal for post fracture, immobilisation, wrist sprains and strains.



PAEDIATRIC WRIST/PALM SUPPORT

CODE	SIZE	MEASUREMENT (WRIST CIRCUMFERENCE)
15901	Paediatric xx-Small	8.5 cm - 11 cm
15902	Paediatric x-Small	10 cm - 12 cm
15903	Paediatric Small	12 cm - 15 cm
10903	Adult x-Small	10 cm - 12 cm
6110	Adult Small	12 cm - 15 cm
6109	Adult Medium	15 cm - 18 cm
6108	Adult Large	18 cm - 22 cm
6100	Adult X-Large	22 cm - 26 cm



USL WRIST/THUMB SUPPORT

The USL Wrist/Thumb Support is ideal for post fracture, thumb immobilisation, wrist sprains and strains and support of the CMC and MCP joint.

- Available in left or right



CODE	SIZE	MEASUREMENT (TAKEN AROUND THE WRIST)
10221-*	Small	15.25 cm - 19 cm
10222-*	Medium	17.75 cm - 21.5 cm
10223-*	Large	19 cm - 23 cm
10224-*	X-Large	21.5 cm - 25.5 cm



Note: To indicate left or right hand, replace * L or R

USL UNIVERSAL WRIST/THUMB STABILISER

The USL Wrist/Thumb Stabiliser is recommended for partial immobilisation of the thumb. The aluminium metal stay provides thumb stability.



CODE	SIZE	MEASUREMENT (TAKEN AROUND THE WRIST)
13905	Small	15.25 cm - 19 cm
13906	Medium	17.75 cm - 21.5 cm
13907	Large	19 cm - 23 cm
13908	X-Large	21.5 cm - 25.5 cm
13909	XX-Large	23 cm - 26.75 cm





view the
full range at
www.uslmedical.co.nz

BIOSKIN™ STANDARD ANKLE SKIN

Features

- Compressive base sleeve which improves proprioception
- Fits easily into most shoes
- Allows for normal range of motion
- Universal left/right
- Optional Fig 8 wrap to surround the ankle joint and limit unwanted movements

Indications

- Post ankle surgery
- Ankle Sprains



DESCRIPTION	USL CODE
BioSkin Standard Ankle with Figure 8 Wrap	BS5351*

Note: To indicate size, replace * with corresponding number from the sizing chart below

SIZING CHARTS

STANDARD ANKLE SKIN			
Circumference from heel to top of the foot-back to heel			
SIZE	*PN	CENTIMETERS	
XS	0	25 - 28	
S	1	28 - 31	
M	2	31 - 33	
L	3	33 - 36	
XL	4	36 - 38	
2XL	5	38 - 41	

BIOSKIN™ BACK SKIN™

Medium-level compression for muscle strains and minor back pain. (Above)

Features

- Narrow cut in front
- Removable double-cinch belt
- Lumbar accessory included

Indications

- Lumbar Strains
- Lumbosacral Strains
- Lumbago
- Lower Back Pain



DESCRIPTION	USL CODE
Standard Back Skin w/ Lumbar Foam Pad	BS4720*

Note: To indicate size, replace * with corresponding number from the sizing chart on the back cover.

BACK SKIN		
Waist measurement		
XS	0	61 - 66cm
S	1	66 - 76cm
M	2	76 - 86cm
L	3	86 - 97cm
XL	4	97 - 107cm
2XL	5	107 - 117cm

Note: Sizing tends to run small. We recommend going up a size if you measure at the upper limit of a particular size.



SERVICE AT YOUR FINGER TIPS

IS YOUR EQUIPMENT IN NEED OF SERVICING?
IS YOUR ANNUAL AUDIT AROUND THE CORNER?

- **Manufactured trained technicians.**
All our technicians have been certified by the manufacturers to calibrate, service, test and electrically safety check your equipment
- **USL service**, calibrate, test and repair to AS/NZS3551 standard
- **Competitively priced**, quality workmanship and customer focused
- **Service contracts** available for priority service

CYNOSURE

gymna

Hill-Rom

HUNTLEIGH

LÖWENSTEIN
medical

MELAG

corpuls

Trumpf
Medical

WEINMANN
medical technology

WelchAllyn

USL Medical is the only authorised service provider for Welch Allyn® warranty products in New Zealand.

USL Biomedical

Services Team receive training and work directly with the manufacturer to provide our customers with first hand up to date service information.

Please give us a call
on **0800 265 218**
for a quote or to book
a service email
**uslbiomedicalservicing@
uslmedical.co.nz**



USL ACCOUNT MANAGERS

PETER GARDNER BUSINESS MANAGER - MEDICAL MARKETS 027 259 1928 peter@uslmedical.co.nz

KARLA DALY

NORTHLAND, AUCKLAND
0275 964 062
karla.daly@uslmedical.co.nz

RACHAEL MCKENZIE

AUCKLAND
027 590 6181
rachael.mckenzie@uslmedical.co.nz

RANIN ASMARO

SOUTH AUCKLAND, WAIKATO,
COROMANDEL
021 444 043
ranin.asmaro@uslmedical.co.nz

DEBBIE MIDDLEMISS

BAY OF PLENTY, HAWKES BAY,
GISBORNE
0275 749 118
debbiem@uslmedical.co.nz

NERIDEE KERRISON

- WELLINGTON, LOWER
NORTH ISLAND
021 599 499
neridee.kerrison@uslmedical.co.nz

KATE HERRON

- CANTERBURY, SOUTH
CANTERBURY
027 586 9321
kate.herron@uslmedical.co.nz

GERALDEAN FARQUHAR

NELSON, SOUTH
CANTERBURY OTAGO &
SOUTHLAND
021 868 002
geralddean.farquhar@uslmedical.co.nz

0800 658 814 | www.uslmedical.co.nz
customerservices@uslmedical.co.nz

usl medical